

a weekend  
of song

# wintersong 2010

Blue Mountains NSW

Join us for a weekend of song, good food and excellent company with leading choral teachers, Stephen Taberner and Rachel Hore. Stephen and Rachel are well known throughout Australia for their inspiring teaching and unique blend of world music, original choral compositions and funky arrangements. Both experienced and beginning singers are welcome.

Guest tutor this year is Paul Jarman (Wintersong 1), a fabulous musician and composer well known for his choral compositions. He will be composing a piece with us on site. We also are delighted to bring back John May and Emily Cooper of Hands Heart and Feet (Wintersong 2) who will be bringing their blend of outstanding rhythm, drum and dance work.

Make sure you get in early with your deposit to secure a place.

**Residential**

\$320/\$285 conc  
Youth (under21) \$170  
(includes all meals)

**Non-residential**

\$260/\$225 conc  
Youth (under 21) \$120  
(includes lunch and dinner)

**Enquires to:**

Rachel Hore  
[rachelhore@ozemail.com.au](mailto:rachelhore@ozemail.com.au)  
(02) 4759 2456

[Click here to DOWNLOAD A BOOKING FORM](#)

Rachel Hore  
[www.rachelhore.com](http://www.rachelhore.com)



Stephen Taberner  
[www.stephentaberner.com](http://www.stephentaberner.com)

## Wintersong 1

July 2nd- 4th

Brahma Kumaris Centre,  
Leura NSW



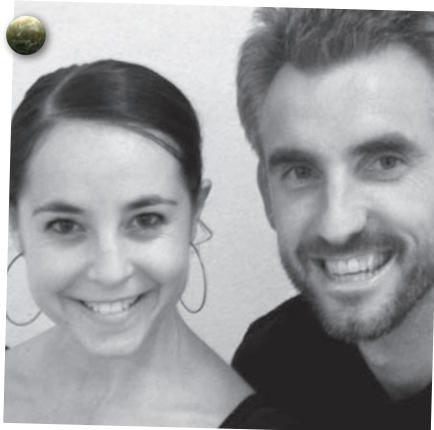
Guest Tutor Wintersong 1  
**Paul Jarman**

[www.sirocco.com/s\\_bios.htm](http://www.sirocco.com/s_bios.htm)

## Wintersong 2

August 6th- 8th

Karuna Sanctuary  
Katoomba NSW



Guest Tutor Wintersong 2  
**John May & Emily Cooper**

[www.handsheartfeet.com](http://www.handsheartfeet.com)



## wintersong 1

### **Brahma Kumaris Centre** (July 2nd-4th)

A retreat centre in Leura, NSW, set in beautiful bushland that includes established Mountain gardens, a lovely creek, singing hall with central heating and dining room with roaring fire. Accommodation is twin share with own bathroom (reserved with your booking). Meals are all vegetarian at Brahma Kumaris. Please note that no alcohol, smoking or drugs are permitted on the site.

Visit [www.bkwsu.org/au/retreats/retreat-locations/Leura/](http://www.bkwsu.org/au/retreats/retreat-locations/Leura/)



## wintersong 2

### **Karuna Sanctuary** (August 6th-8th)

A beautiful bush retreat in Katoomba, NSW, with a roaring fire, meditation room and bush tracks to roam.

Accommodation is either basic dormitory style with shared bathroom or cute compartments in heated railway carriages that sleep 2-3 people.

Accommodation is unreserved at Karuna. Pick your bed when you arrive on a first in first served basis. Both vegetarians and non-vegetarians are catered for at Karuna, and alcohol is permitted.

### **Booking and confirmation**

A deposit of \$100 per person and a booking form is required to secure your place.

A Confirmation letter and info pack will be emailed to you after we have received your payment.

[Click here to  
DOWNLOAD A  
BOOKING FORM](#)

### **Payment options**

#### **1. Electronic**

##### **Pay by EFT direct deposit**

Account Name: Rachel A Hore

Account Number: 125709347 BSB: 112 879

##### **Important:**

Please label your EFT direct deposit W1 or W2 and include your surname. Please keep a reference number for our records. Email notification can be sent to:

[rachelhore@ozemail.com.au](mailto:rachelhore@ozemail.com.au)

#### **2. Post**

**Post your booking form with a cheque or money order of \$100 per person** (payable to Rachel Hore) to:

Rachel Hore

c/o Wintersong PO Box 158,

Lawson 2783

### **Final Payment**

Final payments are due two weeks prior to each event. **18th June** (Wintersong 1). **23rd July** (Wintersong 2)

### **Registration**

Registration is from 5pm on Friday followed by a light supper at 7pm and our first singing session.

### **Programme**

We will begin our singing day at 9am on Saturday and Sunday. Wintersong ends 4.00pm on Sunday. A full programme will be sent with your info pack after booking.

### **Info pack**

Information on 'what to bring' and 'how to get there' will be sent to you after you have made your booking.

### **Refunds and Cancellations**

Please notify us as soon as possible if you cannot attend Wintersong.

All deposits are fully refundable up until 7 days prior to the event, and 50% refundable after that. No refunds for no shows.

### **All Enquiries**

Rachel Hore [rachelhore@ozemail.com.au](mailto:rachelhore@ozemail.com.au) 02 47592456